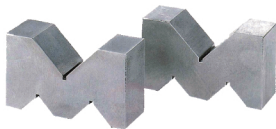


# Mブロック (ヤゲン台Aタイプ)

# M-BLOCK A TYPE

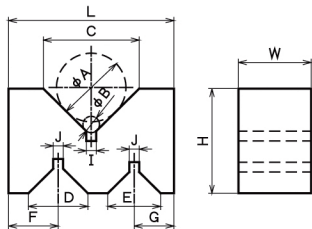


● 材質 FC250  
(2ヶ1組)

□記号 A=A 級仕上げ(0.02~0.03)  
M=機械仕上げ(0.05~0.15)

(寸法表)

単位 長さ(mm) 質量 約(kg)



| No.         | L   | H   | W   | Φ A | Φ B | C   | D   | E  | F    | G    | I | J | 質量(1組) |
|-------------|-----|-----|-----|-----|-----|-----|-----|----|------|------|---|---|--------|
| MVB-126-□01 | 50  | 32  | 22  | 38  | 5.0 | 29  | 18  | 16 | 15.0 | 12.0 | 3 | 3 | 0.2    |
| MVB-126-□02 | 75  | 38  | 25  | 44  | 5.0 | 33  | 25  | 20 | 22.5 | 20.0 | 3 | 3 | 0.9    |
| MVB-126-□03 | 100 | 58  | 35  | 72  | 5.0 | 54  | 33  | 27 | 27.5 | 27.5 | 3 | 3 | 3.0    |
| MVB-126-□04 | 125 | 80  | 50  | 94  | 5.0 | 71  | 47  | 35 | 32.0 | 32.0 | 3 | 3 | 8.0    |
| MVB-126-□05 | 150 | 90  | 60  | 113 | 7.0 | 85  | 45  | 35 | 37.5 | 37.5 | 4 | 4 | 10.0   |
| MVB-126-□06 | 175 | 107 | 62  | 122 | 8.5 | 92  | 60  | 51 | 44.0 | 44.0 | 5 | 5 | 13.0   |
| MVB-126-□07 | 200 | 140 | 90  | 162 | 8.5 | 122 | 79  | 50 | 60.0 | 55.0 | 5 | 5 | 26.0   |
| MVB-126-□08 | 250 | 160 | 110 | 202 | 8.5 | 152 | 88  | 58 | 65.0 | 65.0 | 5 | 5 | 48.0   |
| MVB-126-□09 | 300 | 200 | 125 | 253 | 8.5 | 190 | 108 | 78 | 75.0 | 75.0 | 5 | 5 | 88.0   |